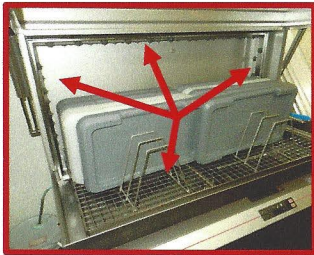




The Utensil Washer Advantage



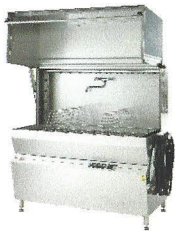
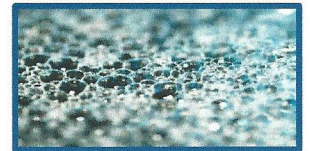
Four-Sided Moving Wash Frame – Completely surrounds the items being washed with multi-directional high pressure spray jets which blast away dirt and grime from all four sides. The Jeros Wash Frame provides complete corner to corner coverage eliminating “dead corners” as it repeatedly travels from back to front and front to back inside the wash chamber.



Guaranteed Sanitization – The Jeros Control System provides Guaranteed Sanitization with every wash. Not only does the Jeros Utensil Washer heat it's own hot rinse water to 84°Celsius (184°F), but with it's exclusive rinse water temperature sensor, it will not allow the washer to switch from Wash Mode to Sanitizing Rinse Mode unless the sensor sees the 184°F hot water in the Rinse Tank. Peace of Mind from the first wash of the day to the last.

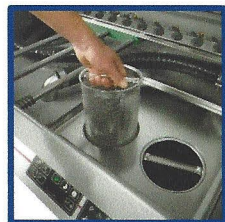
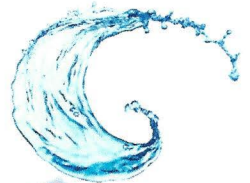


Automatic Soap Dosage – With the built-in soap sensor in the wash tank and the on board soap pump, the Jeros Utensil Washer automatically adds soap as needed. Overdosing and waste of chemicals is eliminated while providing the assurance that dirty utensils are always being properly cleaned.



Three-Sided Open Design – The Jeros Utensil Washer offers full access to the wash chamber from the front and from both sides. This makes it extremely easy to load and unload the Jeros Washer with fewer wasted movements and less back strain. The door raises up and out of the way so the floor space required to operate the Jeros Utensil Washer remains the same with the door open or closed. It also allows for an easy reach into the back of the unit for loading, unloading and cleaning.

Water Savings – The Jeros Utensil Washer is designed to minimize water usage. The total water usage per cycle is as little as 1-1/2 gallon on the model 9130 and 2-1/2 gallon on the models 8150 and 8160. To typically clean a single food lug container can use as much five gallons per lug. The Jeros Washer can wash up to four lugs per cycle saving as much as 18 gallons of water with every wash.



Solids Collection Basket and Cascading Drain – Solids are collected throughout the day in two easy to remove filter baskets. This keeps solid particles from clogging up pumps and water lines as well as allowing for dirtier items to be washed with less pre-rinsing. The internal wash water drain is located at the top of the water level so oils and grease which float to the top always drain off first keeping the wash water as clean as possible. The wash water is replenished during each wash with the 184°F rinse water.

Programmable Controls with One Touch Operation – With three programmable, pre-set, one-touch operation buttons, washing in the Jeros Utensil Washer is as easy as the touch of a button. The three timer “start” buttons allow the operator to quickly choose the wash time based on the dirt load of the items being washed. All controls are conveniently located in front of the operator in a single, easy to use watertight keyboard

