

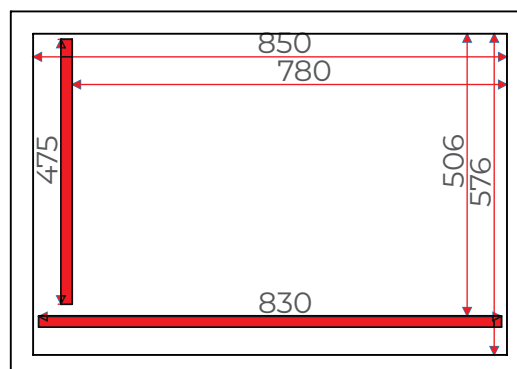
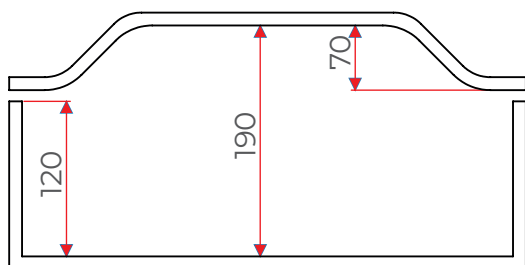


VACUUM MACHINE V85 S



PUMP: 21+21 m³/h
POWER: 1,6 kw
VOLTAGE: 230 V-50/60 Hz
WEIGHT: 145 Kg.

CURVE LID



OPTIONS

HOT WIRE CUTTING (Excess of plastic)
SUPPLEMENT BARS

GENERAL FEATURES

- Digital control board with 25 programmes.
- Made of stainless steel AISI 304.
- Special hygienic design.
- Vacuum.% and time.
- Gas % and time.
- Digital counter of working hours.
- SOFT AIR.
- Automatic control of the sealing cooling.
- Special sealing for fat, blood, water, etc.
- Easy disassembly of the sealing bars for cleaning.